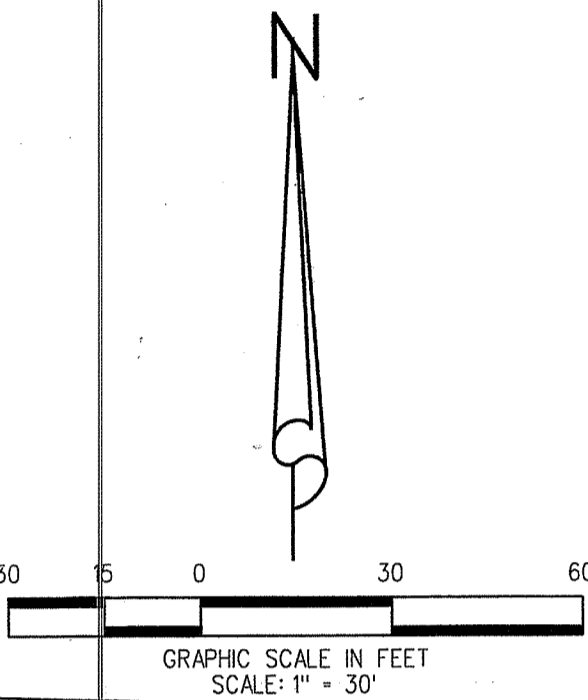
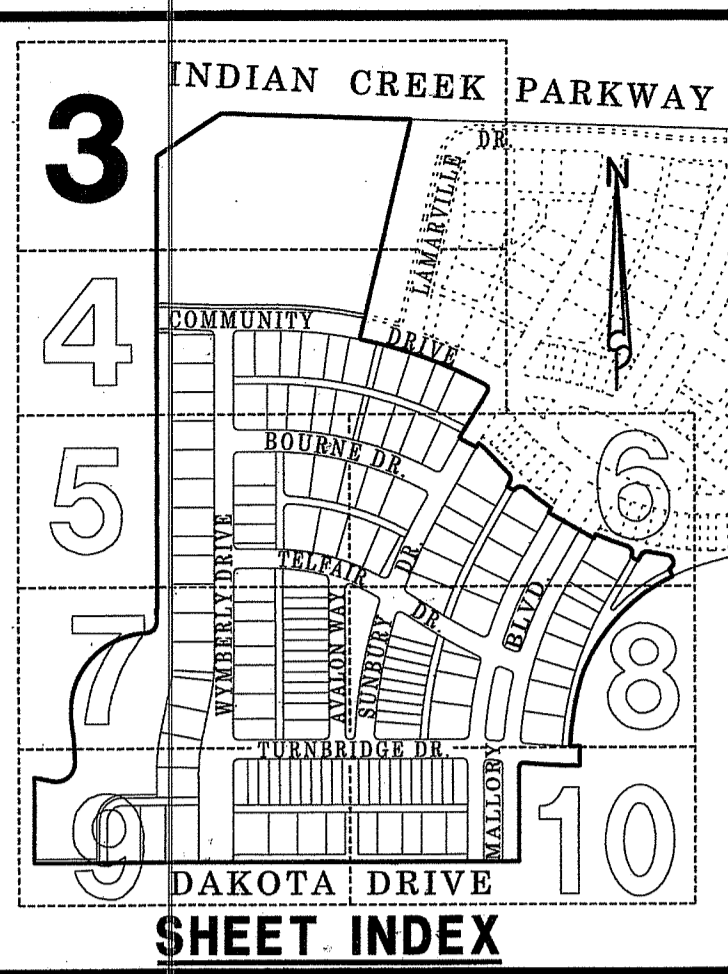


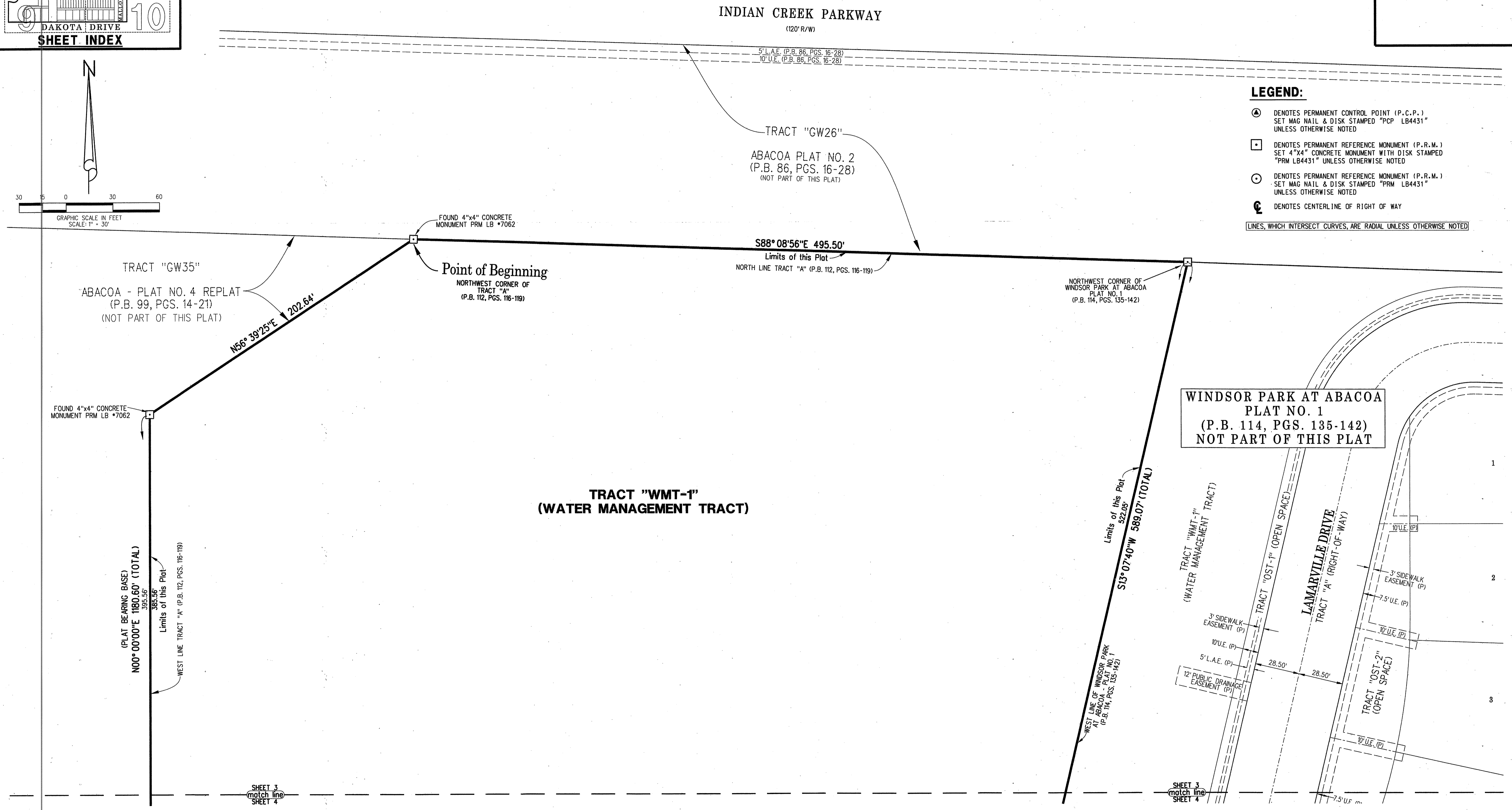
90

WINDSOR PARK AT ABACOA - PLAT NO. 2

BEING A REPLAT OF A PORTION OF TRACT "A" OF THE PLAT OF TRACT RN3R AT ABACOA - REPLAT AS RECORDED IN PLAT BOOK 112, PAGES 116 THROUGH 119, PUBLIC RECORDS OF PALM BEACH COUNTY, FLORIDA. LYING IN SECTION 14, TOWNSHIP 41 SOUTH, RANGE 42 EAST, TOWN OF JUPITER, PALM BEACH COUNTY, FLORIDA
NOVEMBER 2012
SHEET 3 OF 10



- LEGEND:**
- ⊙ DENOTES PERMANENT CONTROL POINT (P.C.P.) SET MAG NAIL & DISK STAMPED "PCP LB4431" UNLESS OTHERWISE NOTED
 - ⊠ DENOTES PERMANENT REFERENCE MONUMENT (P.R.M.) SET 4"x4" CONCRETE MONUMENT WITH DISK STAMPED "PRM LB4431" UNLESS OTHERWISE NOTED
 - ⊙ DENOTES PERMANENT REFERENCE MONUMENT (P.R.M.) SET MAG NAIL & DISK STAMPED "PRM LB4431" UNLESS OTHERWISE NOTED
 - ⊕ DENOTES CENTERLINE OF RIGHT OF WAY
- LINES, WHICH INTERSECT CURVES, ARE RADIAL UNLESS OTHERWISE NOTED



ABBREVIATIONS:

| | | |
|----------------------------------|---|--|
| CB = CHORD BEARING | N.E. = NORTHEAST | R = RADIUS |
| CL = CHORD LENGTH | N.W. = NORTHWEST | R.W.L.E. = RAW WATER LINE EASEMENT |
| D = DELTA | P.C.P. = PERMANENT CONTROL POINT | S.E. = SOUTHEAST |
| D.E. = DRAINAGE EASEMENT | P.B. = PLAT BOOK | S.S.E. = SAFE SIGHT EASEMENT |
| F.P.L. = FLORIDA POWER & LIGHT | P.D.E. = PUBLIC DRAINAGE EASEMENT | S.W. = SOUTHWEST |
| L = ARC LENGTH | PG. = PAGE | U.E. = UTILITY EASEMENT |
| L.A.E. = LIMITED ACCESS EASEMENT | P.R.M. = PERMANENT REFERENCE MONUMENT | (P) = AS SHOWN ON P.B. 114, PGS. 135-142 |
| O.R.B. = OFFICIAL RECORD BOOK | P.S.M. = PROFESSIONAL SURVEYOR AND MAPPER | |

LIDBERG LAND SURVEYING, INC.

675 West Indiantown Road, Suite 200, Jupiter, Florida 33458 TEL. 561-746-8454

| | | | |
|--|---------|-------|--------------------|
| CAD. K:\UST \ 144142 \ WINDSOR \ 10-025A-306 \ 10-025A-306.DGN | | | |
| REF. | | | |
| FLD. | | PG. | JOB 10-025A-306 |
| OFF. CASASUS | | | DATE NOVEMBER 2012 |
| CKD. D.C.L. | SHEET 3 | OF 10 | DWG. D10-025PP |

SHEET 3
match line
SHEET 4

SHEET 3
match line
SHEET 4